



### We Want Snow!

If there is more than 4 inches of snow, come out to Fox Island and Metea for cross-country skiing! We have skis available for rent. The sled hill at Metea County Park will also be open. Check the website for more information.

## The Deciduous Woodlands – Cycle of Seasons

### How seasonal change affects temperate forest life

By: Ron Divelbiss, Naturalist

Most of Fox Island and Metea Park is woodlands. The changing seasons dominate deciduous woodlands. Woodland animals and plants live and breed in conditions that vary widely throughout the year. The key to their success is an ability to survive the winter and then take full advantage of the spring and summer. Deciduous woodland is the natural vegetation of much of temperate Europe and North America, and also occurs in the limited temperate lands of the Southern Hemisphere. But its water retentive soils make excellent farmland, and in places woodlands have been replaced by agricultural development.

In the depths of winter there seems to be little life in a deciduous woodland. The trees are bare, snow may lie along the branches, and there is little bird song to be heard. Yet, even so, there is activity. On the woodland floor shrews hunt for invertebrates such as wood lice and earthworms. Also active are resident birds like downy and hairy woodpeckers and blue jays. The blue jay survives the winter by eating the acorns it stored in autumn. The hairy woodpecker changes diet, eating mostly invertebrates in the warmer months and adding seeds in the winter.

Many species of birds - and bats - simply avoid the winter; they head for warmer climates after breeding. Mammals like the mouse and the skunk stay put but become less active, and some (woodchucks, jumping mice) hibernate.

As winter retreats, the days lengthen, the

temperature rises and the snow melts; greenery and life return to the woods. First come the spring flowering plants, which expand their leaves and produce their flowers before the canopy closes over them and shades them from sunlight. Woodland trees - oak, hickory, maple, ash, beech, and many others - burst into leaf, and no sooner are their leaves expanded than they are being eaten by insects and their larvae.

Migrating birds such as warblers return in spring to build their nests and raise their broods. The plentiful harvest of insects provides breeding birds with a protein-rich diet for their young. Down on the woodland floor deer browse the vegetation, and in the dense understory mice are busy searching out seeds, buds, and invertebrates.

All parts of the woods - from the woodland floor to the top of the canopy - have their predators. Hunting spiders chase small invertebrates across the woodland floor, and far above, superbly adapted woodland hawks hunt small birds among the branches.

By late summer the migratory birds have raised their young and begin to leave. Trees are preparing for the dormancy of winter by withdrawing the nutrients from their leaves, shedding them. The leaves turn brown, red and gold as they die, and the jays hunt once more for acorns. The cycle begins again.

The Wild Grapevine will provide you with nature-related articles and upcoming event information four times per year. All annual pass holders will receive this newsletter free as part of their benefits. Send your email address to : [metea@allencountyparks.org](mailto:metea@allencountyparks.org) for free e-mailed copies.

### ON THE WEB

- Allen County Parks [www.allencountyparks.org](http://www.allencountyparks.org)
- Fox Island Alliance [www.foxislandalliance.org](http://www.foxislandalliance.org)
- Friends of Metea [www.friendsofmetea.org](http://www.friendsofmetea.org)

Allen County Parks is proud to be a partner in the Nistem network

[www.nistem.org](http://www.nistem.org)



### Rentals at Allen County Parks

Allen County Parks can provide an excellent alternative for your next special event, party, conference, meeting, wedding or reception.

For more information email us at [rentals@allencountyparks.org](mailto:rentals@allencountyparks.org) or call 449-3180.

### Just a glimpse of what's inside

Fox Kit Adventures Series	2
Scrapbooking Series	3
Home School Programs	3, 4, 5, 6
Groundhog Day	4
Caving Adventure	6
Jr. Indiana Master Naturalist	7
Sandhill Crane Count	7

# Upcoming Programs for Winter

Program fees are usually \$2.00 per person unless otherwise stated, and are used to provide operating funds (which are not supported by tax revenue) for Allen County Parks. Most programs require pre-registration to allow resource and staff allocation planning. There may be requirements for a minimum number registered to offer the program. You will be notified at least 2 days before the program if it has been cancelled due to minimum registrations not being met.

## Phenological Trail Trekkers

### Fox Island County Park

January 5, February 2, March 1 1:00 PM—3:00 PM

Hike into Fox Island's natural wonderland with the aide of your Allen County Park naturalis! We may even venture off a beaten path or two to unlock the hidden treasures found within Fox Island's woods. In December we found a dead 8 point buck that had been feeding local coyote and probably opossum mammals. We also visited the marsh overlook to view the late season floods and found hundreds of tiny "snow spiders" climbing all over the snow. Old hiking shoes recommended. Meet at the nature center for this free monthly program.

Cost: FREE

Pre-register 5 days prior

Min. 5 Max. 30

To register or for more information:

Email: [nhaley@allencountyparks.org](mailto:nhaley@allencountyparks.org)

Call: 449-3246 Natalie Haley



## Cross Country Ski Clinic

### Fox Island County Park

January 7 & January 28, Saturdays 10 AM - 12:00 PM

Learn: how equipment works, waxing vs. no-wax, purchasing, ski prep and maintenance, how to dress and receive basic instruction & practice on technique, weather permitting. Leave phone number, shoe size, height and weight when registering to reserve equipment. Includes 1 hr. rental or voucher for future rental

Cost: \$7.00 or \$3.00 if bringing your own equipment.

Pre-register by: 1/3

Min: 5 Max: 15

To register or for more information:

Email: [rzartman@allencountyparks.org](mailto:rzartman@allencountyparks.org)

Call: 449-3186 Ron Zartman



## Fox Kit Adventures – "Tracks, Bird of Prey Love Calls and Bats!"

### Fox Island County Park

January 10, February 14, and March 13, Tuesdays 9:30 AM-10:30 AM

Learn how to track various animals found in Fox Island's Nature Preserve – January 10. Listen for the "love call" of the live birds of prey that will visit Fox Island - February 14<sup>th</sup>. Get ready for the spring migration of BATS!!! – March 13. Fee includes a snack & an indoor winter craft. Teachers of attending students are free.

Cost: \$3.00 per child, \$2.00 per parent,

Pre-register by: 5 days prior

Min. 5 Max. 25

To register or for more information:

Email: [nhaley@allencountyparks.org](mailto:nhaley@allencountyparks.org)

Call: 449-3246 Natalie Haley



## Owl Prowl

### Fox Island County Park

January 7, Saturday 5:30 PM – 7:30 PM

We will gather indoors to discover whoooo our resident owls are, and then head outdoors to try to call some in. Dress for the weather and for trails.

Cost: \$2.00

Pre-register by 1/3

Min: 5 Max. 15

To register or for more information:

Email: [rzartman@allencountyparks.org](mailto:rzartman@allencountyparks.org)

Call: 449-3186 Ron Zartman



## Cross Country Ski Clinic

### Metea County Park Nature Center

January 14, Saturday 9:00 AM – 12:00 PM

Learn how ski equipment works, waxing vs. no-wax, what purchase is, ski prep and maintenance, and how to dress for the sport. After a basic instruction session, we will ski the trails of Metea and practice our technique, weather permitting.

Cost: \$ 7.00

Pre-register by: 1/11

Min: 5 Max: 20

To register or more information:

Email: [mgobert@allencountyparks.org](mailto:mgobert@allencountyparks.org)

Call: 449-3777 Michael Goibert



[allencountyparks.org](http://allencountyparks.org)

## Winter Camping

### Metea County Park

January 15, Sunday 3:00 PM - 5:00 PM

Come learn the basics of primitive camping and winter survival skills. Learn about the gear you need, where & how to set up a site, how to leave no trace, packing, and planning. This is a comprehensive workshop for adults/mature youth.

Cost: \$ 5.00

Pre-register by: 1/10

Min. 5 Max. 15

To register or for more information:

Email: [mgobert@allencountyparks.org](mailto:mgobert@allencountyparks.org)

Call: 260-449-3777 Michael Goibert



### Scrapbooking "Crop 'Til You Drop!"

Fox Island County Park

January 20, February 17, and March 16 6:00 PM-Midnight

Now that the Christmas rush is over, do you need some personal time and conversation to beat off the winter chill? Join Creative Memories Consultant, Sherina Hewson, in scrapbooking those holiday memories. We provide a warm winter atmosphere with fireplace and refreshments to ward off the chill. Pizza can be ordered for an additional \$5.00. Everyone usually brings an optional snack to share (not required). Crafters that just need the table space & conversation may spend their time sewing or crafting for the same fee. New this year: If you bring a new scrapbooking friend, you will receive \$5.00 off your registration. Pre-registration is required five days in advance. If you pre-register, you will have until 24 hours prior to cancel, otherwise, we will need to invoice you -family emergencies, not included.

Cost: \$10.00 per class.

Pre-register by: 5 days prior REQ'D

Min. 5 Max. 22

To register or for more information:

Email: [nhaley@allencountyparks.org](mailto:nhaley@allencountyparks.org)

Call: 449-3246 Natalie Haley



### Bluebird Box Building

Fox Island County Park

January 26, Thursday 6:00 PM - 9:00 PM

Learn how to build & monitor your own bluebird box. We will be putting together bluebird boxes for our bluebird box trail and one box per family to take home with them. We will be hiking the bluebird box trail.

Cost: \$15.00 per box

Pre-register by 1/22

Min. 5 Max. 25

To register or for more information:

Email: [nhaley@allencountyparks.org](mailto:nhaley@allencountyparks.org)

Call: 449-3246 Natalie Haley



### Stars In Your Eyes 8 NISTEM points

Good for Home School (but all can attend)

Metea County Park Nature Center

January 26, February 2, 9, & 16 7:30 PM - 9:00 PM

Boldly go where you have never gone before - to classes about astronomy! Take four nights out of winter and expand your horizons to infinity. The first night will be about observing methods and stars, the second about constellations, the third about the solar system, and the last about galaxies, nebulae and other distant objects. We will be observing with telescopes after each class (weather permitting). Bring binoculars or telescopes if you have them or need help with them. Cost includes all handout materials.

Cost: \$20.00 for the series,

Pre-register by: 1/21

Min: 5 Max: 55

To register or more information:

Email: [bdispenza@allencountyparks.org](mailto:bdispenza@allencountyparks.org)

Call: 449-8619 Bob Dispenza



### Night Hike 2 NISTEM points

Metea County Park Nature Center

January 20, Friday 7:30 PM

No moon will light our path as we seek the secrets of the winter nighttime woods. Flashlights are welcome, but not needed. Be prepared for Indiana weather and wet or muddy trails.

Cost: \$2.00 Free to pass holders

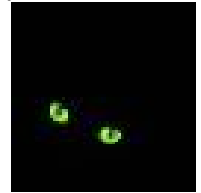
Pre-register by: 1/16

Min: 5 Max: 55

To register or more information:

Email: [bdispenza@allencountyparks.org](mailto:bdispenza@allencountyparks.org)

Call: 449-8619 Bob Dispenza



### Preschool Discovery Hour - Animals in Winter

Fox Island County Park

January 24, Tuesday 1:00 PM - 2:00 PM

Migrate, Hibernate or adapt. What do animals do to make it through the winter? We will explore how animals survive the winter indoors, go out to look for signs of their activity, then warm up with a snack.

Cost: \$3.00/Child \$2.00/adult

Pre-register by: 1/19

Min:5 Max: 20

To register or for more information:

Email: [zartman@allencountyparks.org](mailto:zartman@allencountyparks.org)

Call: 449-3186 Ron Zartman



### Outdoor Education - You Pick the Subject

School and public groups are welcome to contact any Allen County Park to set up programs on a wide variety of natural and cultural history subjects - from "astronomy to zoology" and anything in between! You can come to us, or we can go to you. Scouts, civic groups, church groups, and homeschoolers - we are at your service.



### Introduction to the Microscope 1 2 NISTEM points

Good for Home School

Metea County Park Nature Center

January 31, Tuesday 1:00 PM to 3:00 PM

This is a class on learning how to use the microscopes the right way. Students will learn about four different kinds of microscopes and learn the proper way to handle, use and care for these delicate tools. Students must be 13 or older to take this class. Microscope 1 must be taken before a student can take Microscope 2.

Cost: Students \$ 5.00 Adults \$2.00

Pre-register by: 1/24

Min. 5 Max. 9

To register or for more information:

Email: [rdivelbiss@allencountyparks.org](mailto:rdivelbiss@allencountyparks.org)

Call: 449-3778 Ron Divelbiss



### Groundhog Day

#### Metea County Park

February 2, Thursday 10:00 AM

As the weather continues cold, we all wonder when spring warmth will be arriving. One of our native animals has a reputation for being able to tell when – the groundhog. We are going to encourage him with a little celebration held in his honor. Learn about hibernation, the history of woodchuck weathermen, sing some Groundhog Day songs, and go looking for our own Metea Park Marvin. Will he see his shadow or will he just hibernate through his special day?

Cost: \$2.00

Pre-register by: 1/31

Min: 5 Max: 55

To register or for more information:

Email: [bdispensa@allencountyparks.org](mailto:bdispensa@allencountyparks.org)

Call: 449-8619 Bob Dispenza



### Trailblazers Medallion Mounting Workshop & Update

#### Metea County Park Nature Center

February 4, Saturday 10:00 AM

If you need help mounting your Allen County Trailblazers medallion on your hiking stick, or if you want to know more about the Trailblazers program for 2012, this is for you. We will have tools and expertise to help, and updates on next year's trails. Don't forget to pick up your awards by January 30!

Cost: FREE

Please Pre-register by: 2/1

Min. 5 Max. 55

To register or for more information:

Email: [bdispensa@allencountyparks.org](mailto:bdispensa@allencountyparks.org)

Call: 449-8619 Bob Dispenza



### Using the Microscope 2

2 NISTEM points

#### Good for Home School

#### Metea County Park Nature Center

February 7, Tuesday 1:00 PM - 3:00 PM

This is the second session on using the microscope. Now that you know how to use the microscopes we will look at all kinds of microscopic things. Students must be 13 or older to take this class. Completion of Microscope 1 required. (See 1/31)

Cost: Students \$5.00 Adults \$2.00

Pre-register by: 1/31

Min. 5 Max. 9

To register or for more information:

Email: [rdivelbiss@allencountyparks.org](mailto:rdivelbiss@allencountyparks.org)

Call: 449-3778 Ron Divelbiss



### Winter Night Games

#### Fox Island County Park

February 9, Thursday 6:00 PM - 9:00 PM

Learn how to make fleece mittens and (weather permitting) we will have some winter fun in the snow! Includes warm refreshments, fireplace and crafts. Please don't forget to dress for cold winter weather!

Cost: \$5.00 per person

Pre-register by 2/4

Min. 5 Max. 25

To register or for more information:

Email: [nhaley@allencountyparks.org](mailto:nhaley@allencountyparks.org)

Call: 449-3246 Natalie Haley



### Cross Country Ski Clinic

#### Metea County Park

February 18, Saturday 2:00 PM - 5:00 PM

Learn how equipment works, waxing vs. no-wax, purchasing, ski prep and maintenance, and how to dress. Receive basic instruction and practice on technique, weather permitting. Snacks provided!

Cost: \$10, includes ski rental and snacks

Pre-register by: 2/13

Min. 5 Max. 20

To register or for more information:

Email: [mgobert@allencountyparks.org](mailto:mgobert@allencountyparks.org)

Call: 449-3777 Michael Gobert



### Animal Homes – Pre-Kindergarten

#### Metea County Park

February 16, Thursday 1:00 PM - 3:00 PM

Come out to Metea Park and study some of the different homes animals make, or those that we make for the animals. Class held inside the Nature Center. For Pre K (4 & 5 yr olds) Cost includes activity, snack and a bird house for each child.

Cost: \$7.00 for child and \$2.00 for an accompanying adult

Pre-register by: 2/12

Min. 5 Max. 10

To register or for more information:

Email: [rdivelbiss@allencountyparks.org](mailto:rdivelbiss@allencountyparks.org)

Call: 449-3778 Ron Divelbiss



### Great Backyard Bird Count

#### Fox Island County Park

February 19, Sunday 1:00 PM - 3:00 PM

Join thousands of other beginning and devoted birders as we find out how many birds and the variety of bird species are found in Allen County and across the United States. This will help scientists compare bird survival rates from one year to the next. For more information on the Great Backyard Bird Count, view their website at [www.birdsource.org/gbbc/!](http://www.birdsource.org/gbbc/)

Cost: \$2.00 park entry

Pre-register by: 2/14

Min. 5 Max. 30

To register or for more information:

Email: [nhaley@allencountyparks.org](mailto:nhaley@allencountyparks.org)

Call: 449-3246 Natalie Haley



### Evening Experiences

#### Metea County Park

February 19, Sunday 4:00 PM - 6:00 PM

Close the day by watching the world turn in. A sunset walk at Metea County Park. Dress weather appropriate, the hiking is easy to moderate, and often wet.

Cost: \$3.00

Pre-register by: 2/14

Min. 5 Max. 20

To register or for more information:

Email: [mgobert@allencountyparks.org](mailto:mgobert@allencountyparks.org)

Call: 449-3777 Michael Gobert



### Preschool Discovery Hour - Squirrels

#### Fox Island County Park

February 21, Tuesday 1:00 PM - 2:00 PM

The Fox Squirrel is not the only kind that lives at Fox Island. We'll explore Chipmunks, Red & Flying Squirrels, too. We'll go outside to look for signs of them before finishing with a snack.

Cost: \$3.00/Child \$2.00/adult

Pre-register by: 2/16

Min:5 Max: 20

To register or for more information:

Email: [rzartman@allencountyparks.org](mailto:rzartman@allencountyparks.org)

Call: 449-3186 Ron Zartman



### Night Hike

2 NISTEM points

#### Payton County Park

February 24, Friday 7:30 PM

Stars sparkle in the night sky as we stroll through the old fields and wetlands of Payton County Park. Flashlights are welcome, but not needed.

Cost: \$2.00

Pre-register by: 2/20

Min: 5 Max: 55

To register or more information:

Email: [bdispenza@allencountyparks.org](mailto:bdispenza@allencountyparks.org)

Call: 449-8619 Bob Dispenza



### Earthworm Dissection- 2 NISTEM points

#### Good for Home School

#### Metea County Park Nature Center

February 21, Tuesday 1:00 PM - 3:00 PM

Join Ron for a session with an earthworm. We'll observe a living earthworm & then dissect a preserved one. The earthworm is the simplest animal that we will observe, but most difficult to dissect. Dissecting skills will be gained during this dissection. If a major mess-up occurs we'll start over with a new worm. Skills gained during this dissection will be helpful in following dissections. A student may do any or all the dissections. Students must be 13 or older.

Cost: Students \$ 5.00 Adults \$2.00

Pre-register by: 2/14

Min. 5 Max. 15

To register or for more information:

Email: [rdivelbiss@allencountyparks.org](mailto:rdivelbiss@allencountyparks.org)

Call: 449-3778 Ron Divelbiss



### Coyote Howl

#### Fox Island County Park

February 26, Sunday 5:30 PM - 7:00 PM

Join us for an evening hike to search for signs and listen for these wily canines. Dress warm for the weather and for trails.

Cost: \$2.00

Pre-register by: 2/21

Min: 5 Max: 15

To register or for more information:

Email: [rzartman@allencountyparks.org](mailto:rzartman@allencountyparks.org)

Call: 449-3186 Ron Zartman



### Crayfish Dissection

2 NISTEM points

#### Good for Home School

#### Metea County Park Nature Center

February 28, Tuesday 1:00 PM - 3:00 PM

Join Ron for a crayfish dissection. We will study the parts that are visible from the outside & then open it up and see what's on the inside. Skills gained during the earthworm dissection will be helpful in following dissections. A student may do any or all the dissections. Students must be 13 or older.

Cost: Students \$ 5.00 Adults \$2.00

Pre-register by: 2/21

Min. 5 Max. 15

To register or for more information:

Email: [rdivelbiss@allencountyparks.org](mailto:rdivelbiss@allencountyparks.org)

Call: 449-3778 Ron Divelbiss



### Tai Chi

#### Fox Island County Park

February 29 - April 18, Wednesdays 6:00 - 7:00 PM

Instructor Sandy Gebhard will teach the Sun Seventy-three Form in this eight week Tai Chi class. This gentle, non-strenuous form can be practiced by all. Be prepared to have fun as you join this light hearted group. Registration accepted thru 3<sup>rd</sup> week if min. is reached

Cost: \$50.00 for eight weeks

Pre-register by: 2/24

Min: 10 Max: 25

To register or for more information:

Email: [rzartman@allencountyparks.org](mailto:rzartman@allencountyparks.org)

Call: 449-3186 Ron Zartman



**Caving Adventure—Pre Caving Class**

**Metea County Park Nature Center**

**March 2, Friday 7:30 PM**

This a mandatory pre-caving class for the Caving Adventure on March 10th. See Caving Adventure Trip. Class fee covers maps and caving instruction. Learn about geology, cave life, needed equipment and cave formation. This activity is somewhat strenuous, but suitable for beginners in good physical condition.

Cost: \$25.00 for class &

Pre-register by: 2/27

Min. 5 Max. 25

To register or for more information:

Email: [bdispenza@allencountyparks.org](mailto:bdispenza@allencountyparks.org)



**Fish Dissection- 2 NISTEM points**

**Good for Home School**

**Metea County Park Nature Center**

**March 6, Tuesday 1:00 PM - 3:00 PM**

Join Ron for a fish dissection. We'll study the parts visible from the outside, then open it up and see what's inside. Skills gained during this dissection will be helpful in following dissections, students may do any or all the dissections. Students must be 13 or older

Cost: Students \$ 10.00 Adults \$2.00

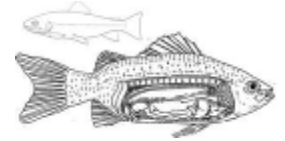
Pre-register by: 2/28

Min. 5 Max. 15

To register or for more information:

Email: [rdivelbiss@allencountyparks.org](mailto:rdivelbiss@allencountyparks.org)

Call: 449-3778 Ron Divelbiss



**Caving Adventure Trip 5 Nistem Points**

**Metea County Park Nature Center**

**March 10, Saturday 7:30 AM—8:00 PM**

We'll be exploring a wild cave near Springville and going off the beaten path, looking for cave wildlife and unusual formations. YOU MUST HAVE TAKEN PRE CAVING CLASS ON MARCH 2nd to participate. This activity is somewhat strenuous, but suitable for beginners in good physical condition.

Cost: \$25.00 Paid for at pre-caving class

Please Pre-register by: 2/27

Min. 5 Max. 25

To register or for more information:

Email: [bdispenza@allencountyparks.org](mailto:bdispenza@allencountyparks.org)

Call: 449-8619 Bob Dispenza



**Spotting Owls**

**Fox Island County Park**

**March 11, Sunday 4:00 PM – 5:30 PM**

Join us for a walk through Great Horned and Barred Owl habitats. We will attempt to view Great Horned Owls on the nest through a spotting scope and will scan for owls on route. Bring optics.

Cost: \$2.00

Pre-register by: 3/6

Min: 5 Max. 20

To register or for more information:

Email: [rzartman@allencountyparks.org](mailto:rzartman@allencountyparks.org)

Call: 449-3186 Ron Zartman



**Providing Chimney Swift Nesting Towers**

**Fox Island County Park**

**March 11, Sunday 2:00 PM**

Current building methods have reduced nesting opportunities for Chimney Swifts. Indianapolis birder, Don Gorney, will speak on his efforts to erect nesting towers that mimic old fashioned chimneys, the swifts preferred artificial nest sites. A model and plans will be displayed. Program Partner: Stockbridge Audubon

Cost: \$2.00 Park Entry Free to annual pass holders

Pre-register by: 3/6

Min: 5 Max: 60

To register or for more information:

Email: [rzartman@allencountyparks.org](mailto:rzartman@allencountyparks.org)

Call: 449-3186 Ron Zartman



**American Woodcock Sky Dance**

**Fox Island County Park**

**March 11, Sunday 6:30 PM – 7:45 PM**

Attend the courtship "sky dance" of the American Woodcock. Dress warm for the weather and wander the open fields to observe this annual rite of Spring. We will see and hear male birds perform aerial feats.

Cost: \$2.00

Pre-register by: 3/6

Min: 5 Max. 20

To register or for more information:

Email: [rzartman@allencountyparks.org](mailto:rzartman@allencountyparks.org)

Call: 449-3186 Ron Zartman



**Frog Dissection- 2 NISTEM points**

**Good for Home School**

**Metea County Park Nature Center**

**March 13, Tuesday 1:00 PM - 3:00 PM**

Join Ron for a frog dissection. We will study the parts visible from the outside, then open it up & see what's inside. Skills gained during previous dissections will be helpful in this dissection. Students must be 13 or older to take this class.

Cost: Students \$ 10.00 Adults \$2.00

Pre-register by: 3/6

Min. 5 Max. 15

To register or for more information:

Email: [rdivelbiss@allencountyparks.org](mailto:rdivelbiss@allencountyparks.org)

Call: 449-3778 Ron Divelbiss



### The Almost Lost Art of Observation

#### Metea County Park

March 17, Saturday 3:00 PM - 5:00 PM

The art of observation is to detect, discover, or determine the existence, presence, or fact of that which is being observed, utilizing ones' senses & the resultant facts & emotions therein.

Cost: \$3.00

Pre-register by: 3/12

Min: 5 Max: 15

To register or for more information:

Email: [mgobert@allencountyparks.org](mailto:mgobert@allencountyparks.org)

Call: 449-3777 Michael Gobert



### Orienteering for the Directionally Challenged 2 NISTEM PTS

#### Metea County Park

March 18, Sunday 2:00 PM - 4:00 PM

Have troubles finding your way around in nature? Come and find your bearings as we orient ourselves upon how to read a map and utilize a compass.

Cost: \$3.00

Pre-register by: 3/13

Min: 5 Max: 15

To register or for more information:

Email: [mgobert@allencountyparks.org](mailto:mgobert@allencountyparks.org)

Call: 449-3777 Michael Gobert



### Preschool Discovery Hour - Owls

#### Fox Island County Park

March 20, Tuesday 1:00 PM - 2:00 PM

Great Horned Owls have raised young at Fox Island for the last three years. We will learn about them and other owls that live here. We'll hike out to try to see them on the nest, and then finish with a snack.

Cost: \$3.00/Child \$2.00/adult

Pre-register by: 3/15

Min: 5 Max: 20

To register or for more information:

Email: [rzartman@allencountyparks.org](mailto:rzartman@allencountyparks.org)

Call: 449-3186 Ron Zartman



### Night Hike 2 NISTEM points

#### Metea County Park NORTH

March 23, Friday 8:00 PM

The new moon shed no light as we stroll through the hills and forests of Metea North. Frog serenades possible! Flashlights are welcome, but not needed. Be prepared for Indiana weather.

Cost: \$2.00 Free to pass holders

Pre-register by: 3/19

Min: 5 Max: 55

To register or more information:

Email: [bdispenza@allencountyparks.org](mailto:bdispenza@allencountyparks.org)

Call: 449-8619 Bob Dispenza



### Jr. Indiana Master Naturalist Class 2012

#### Fox Island County Park

April 2-6, Monday-Friday 9:00 AM - 3:30 PM daily

Your child, ages 9-13, can become a Jr. Indiana Master Naturalist. The Allen County Parks, Fox Island Alliance, Stockbridge Audubon Society, Soarin' Hawk and Gone Batty rehabilitators, Natural Resource Conservation Service's soil scientist, Scot Haley, amphibian and reptile specialist, Christ Barlow, and the Indiana Department of Natural Resources, are teaming up to sponsor the third year for Allen County's Jr. Indiana Master Naturalist Class. Eight classes on individual topics such as backpacking survival, local geology and Fox Island's turtles, amphibians, mammals and more! We will also incorporate two volunteer workshop sessions during class time this year. Your child must attend 80% of the classes and the two volunteer workshops, as well as one independent volunteer workshop to achieve their Jr. IMN certification. Call to sign your child up for this scientific holiday!

Cost: \$80.00 per student and includes three field guides, class materials, room rental, snack and registration.

Pre-register by 3/16.

Min. 10 Max. 20

To register or for more information:

Email: [nhaley@allencountyparks.org](mailto:nhaley@allencountyparks.org)

Call: 449-3246 Natalie Haley



### Annual Midwest Crane Count

Location: To Be Announced!

April 14, Saturday 6:00 AM - 8:00 AM

Join Allen County Park Naturalist, Natalie Haley, and Crane Count Coordinator, Mark Weldon, the General Curator for the Fort Wayne Children's Zoo, with his second Annual Midwest Sandhill Crane Count. This census will help us determine how well the sandhill crane populations have recovered since they began re-appearing in Indiana in the 1970's. A training session in March (date TBA) is required. (additional registrants may be moved to other sites)

Cost: Free

Pre-register by 4/10

Min. 1 Max. 20

To register or for more information:

Email: [nhaley@allencountyparks.org](mailto:nhaley@allencountyparks.org)

Call: 449-3246 Natalie Haley






*Winter is a great time to visit your Allen County Parks. You can still hike the trails or cross country ski, sled, watch the birds, or just come out and sit by a fire in either of the Nature Centers.*



Our Mission: "To establish and manage a permanent park system incorporating conservation, education, outdoor values and nature preservation, and to provide recreational opportunities for the people of Allen County within this structure"

Allen County does not discriminate because of disability in the admission to, or treatment or employment in, its programs or activities. The Human Resources Director has been designated to coordinate compliance with nondiscrimination requirements contained in Section 35.107 of the Department of Justice regulations, Information concerning the provisions of the Americans with Disabilities Act, and the rights provided therein, and Allen County's ADA policy is available from the ADA Coordinator. Suggestions on how the County can better meet the needs of persons with disabilities may be submitted to the ADA Coordinator at: Human Resources Department Suite 380 Citizens Square, 200 E. Berry Street, Fort Wayne, In. 46802 or by phone at (260)449-7217, TDD (260)449-7881.

We're on the web: [www.allencountyparks.org](http://www.allencountyparks.org)



7324 Yohne Road  
Fort Wayne IN 46809  
Phone: 260.449.3180  
Fax: 260.449.3181