



Inside this issue:

Chronological listing of programs	2
Special Events	3
Pre-School Programs	4
Multi date and Training Programs	5
Nature Hikes & Programs	5 - 6
Home School Programs	7-8
Summer Day Camps 2017	8

## Moonshadow

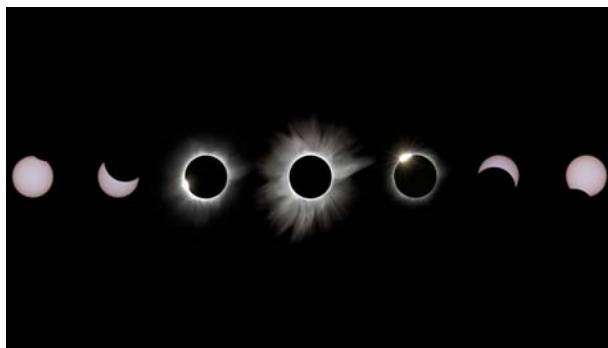
### The Great Solar Eclipse of 2017

By Bob Dispenza, Parks and Education Manager, Allen County Parks

"All that is now, All that is gone, All that's to come and everything under the sun is in tune but the sun is eclipsed by the moon." – Pink Floyd

"I'm being followed by a moonshadow." – Cat Stevens (Yusuf Islam)

Humanity has had a long and turbulent relationship with eclipses. Some cultures saw them as good omens – the sun and moon in an intimate embrace. Many saw a bad outcome. Unpredicted eclipses caused emperors to fall, and events to change direction. Some exploited them, as when Columbus used a lunar eclipse to convince Jamaican natives to continue feeding his shipwrecked crew in 1504. Loud noises, such as banging pots and pans, and shooting off cannons, were used to scare away whatever was eating the sun. Great works were undertaken in efforts to predict eclipses – one of the possible uses of Stonehenge in England was as just such a predictor.



Great works were undertaken in efforts to predict eclipses – one of the possible uses of Stonehenge in England was as just such a predictor.

**ON THE WEB**

Allen County Parks  
[www.allencountyparks.org](http://www.allencountyparks.org)

Fox Island Alliance  
[www.foxislandalliance.org](http://www.foxislandalliance.org)

Friends of Metea  
[www.friendsofmetea.org](http://www.friendsofmetea.org)

Allen County Parks is proud to be a partner in the Nistem network

[www.nistem.org](http://www.nistem.org)



We now know that eclipses happen when the sun moon and Earth line up in a particular way. If the earth comes between the sun and the full moon, we have a lunar eclipse. Lunar eclipses are rarer, but solar eclipses are more dramatic. The new moon comes between the sun and the Earth. Since the moon's orbit is an ellipse and not a circle, sometimes it is farther away, resulting in an annular eclipse (a ring of sun shines around the moon, so no complete darkness).

This years is total, since the moon is a little nearer than in 1994 (our last annular eclipse). We don't have eclipses every month because the moon's orbit is offset five degrees from the Earth's solar orbit.

Looking at the sun any time can cause eye damage. Infrared rays can harm the retina, but there will be no pain due to lack of pain receptors in the retina. Because permanent damage can be painless, it is essential that proper filters be used. There is a long list of things that don't work, including sunglasses, plastic packaging, photographic filters, smoked glass, telescopic sun filters that attach to an eyepiece, Mylar balloons, and many more. **DO NOT USE THESE.**

*Continued on page 9*



## Your Allen County Parks!



**Fox Island County Park**, 7324 Yohne Road, southwest Fort Wayne 449-3180

**Metea County Park**, 8401 Union Chapel Road, at State Route 1, Leo-Cedarville 449-3777

**Payton County Park**, 13928 Dunton Rd. just east of Hometown between Gump and Hathaway Roads

**Cook's Landing County Park**, corner of Shoaff and Coldwater Roads

**Deer Run Wilderness Area** — Spencerville IN—PROGRAMMED USE ONLY

### Plan Your Own Hike!

Plan your own hike! Allen County Parks offers custom hikes also.

Contact any of our naturalists for more information. At only \$2.00 per person with a \$20.00 minimum it's a great bargain.



### Upcoming Programs for Spring & Summer

Program fees are usually \$2.00 per person unless otherwise stated, and are used to provide operating funds (which are not supported by tax revenue) for Allen County Parks. Most programs require pre-registration to allow resource and staff allocation planning. There may be requirements for a minimum number registered to offer the program. You will be notified at least 1 day before the program if it has been cancelled due to minimum registrations not being met.

**FOR CHRONOLOGICAL LISTING OF ALL PROGRAMS SEE BELOW.** The page number the program can be found on, follows the date and program name.

### *Programs Chronologically - Date, Name, Location, and page number (HS = Home School Program)*

#### April

- 10 DNA-RNA & Proteins (HS) - Metea 7
- 11 Fox Kit Club "Spring Floods" - Fox Island 4
- 12 Family Mystery Mornings at Metea - Metea 4
- 12 Tai Chi - Fox Island 5
- 13 Night Hike—Metea North 5
- 14 Hike the Trails - Fox Island 5
- 17 Cell Growth Mitosis & Cytokinesis (HS) - Metea 7
- 18 Preschool Discovery Hour Animal Tracks - Fox Island 4
- 19 Tai Chi - Fox Island 5
- 21 Scrapbooking/Craft Night Fox Island 5
- 21 Caving Adventure Pre-class—Metea 3
- 22 Metea's EARTH at Night—Metea 3
- 22 Daylight to Dark Hike—Fox Island 6
- 24 Intro to Genetics—Meiosis (HS) —Metea 7
- 26 Tai Chi - Fox Island 5
- 29 Caving Adventure—Metea 3

#### May

- 1 Flowerless Plants (HS) - Metea 7
- 3 Tai Chi - Fox Island 5
- 6 SolFest 2017—Fox Island 3
- 7 SolFest 2017—Fox Island 3
- 8 Roots, Stems, & Leaves (HS) - Metea 8
- 9 Fox Kit Club Adventures "May Flowers" - Fox Island 4
- 10 Family Mystery Mornings at Metea - Metea 4
- 10 Tai Chi - Fox Island 5
- 14 Mothers Day Hike — Metea 6
- 16 Pre-school Discovery Hour "Tadpoles & Frogs" - Fox Island 4
- 17 Tai Chi - Fox Island 5
- 19 Scrapbooking/Craft Night Fox Island 5
- 24 Tai Chi - Fox Island 5
- 31 Tai Chi - Fox Island 5

#### June

- 4 How to Raise a Monarch Butterfly - Fox Island 6
- 12 Fox Fish and Canoe Camp - Fox Island 3
- 13 Fox Fish and Canoe Camp - Fox Island 3
- 14 Fox Fish and Canoe Camp - Fox Island 3
- 15 Fox Fish and Canoe Camp - Fox Island 3
- 16 Fox Fish and Canoe Camp - Fox Island 3
- 19 Fox Survival Camp—Fox Island 3
- 20 Fox Survival Camp—Fox Island 3
- 21 Fox Survival Camp—Fox Island 3
- 22 Fox Survival Camp—Fox Island 3
- 23 Fox Survival Camp—Fox Island 3
- 27 Preschool Discovery Hour "Bug Hunt" - Fox Island 4

#### July

- 10 Canoe Camp 1 - Metea 3
- 11 Canoe Camp 1 - Metea 3
- 12 Canoe Camp 1 - Metea 3
- 13 Canoe Camp 1 - Metea 3
- 14 Canoe Camp 1 - Metea 3
- 17 Canoe Camp 2 - Metea 3
- 18 Canoe Camp 2 - Metea 3
- 19 Canoe Camp 2 - Metea 3
- 20 Canoe Camp 2 - Metea 3
- 21 Canoe Camp 2 - Metea 3

#### August

- 19 Introductory Program for Eclipse Trip—Metea 3
- 21 Trip to Totality —Solar Eclipse Travel Program— Metea 3

## Special Events

### Caving Adventure

**Metea County Park Nature Center & a wild cave in southern Indiana**

**April 21 - pre-class, Friday 7:30 PM pre-class**

**April 29, - trip, Saturday All day trip**

Go underground with Allen County Parks. Bob will be leading a trip to a new cave in southern Indiana. We'll be exploring a wild cave in the area and going off the beaten path, looking for cave wildlife and unusual formations. Mandatory pre-caving class is Friday, April 21, 7:30 PM at the Metea Visitor Center. Class fee covers maps & caving instruction. Learn about geology, cave life, needed equipment & cave formation. This activity is somewhat strenuous, but suitable for beginners in good physical condition.

Cost: \$25.00

Pre-register by: 4/18 Min: 5 Max: 25

To register or more information: Email: [bdispenza@allencountyparks.org](mailto:bdispenza@allencountyparks.org) Call: 449-8619 Bob Dispenza



### Metea's EARTH at Night

**Metea County Park**

**April 22, Saturday 7:30 PM - 9:00 PM**

This event will recognize the valuable resources provided by Meno-aki or "Mother Earth". Enjoy a relaxing evening walking amongst the stars on Metea's Meno-aki trail. Maximum registration 40. Call 449-3778 to reserve your spot. Hiking in the dark will be highly encouraged. We will meet out front of the nature center at the picnic shelter at 7:30PM. Restrooms in the nature center will be available for our group.

Cost: \$2.00

Pre-register by: 4/18 Min: 5 Max: 40

To register or for more information: Email: [nhaley@allencountyparks.org](mailto:nhaley@allencountyparks.org) Call: 449-3778 Natalie Haley

### Fox Island Sol Fest

**Fox Island County Park Bowman Lake Area**

**May 6, Saturday May 7, Sunday 12:00 Noon - 7:00 PM both days**

The birds are back, the wildflowers are blooming and there's music in the air. Celebrate the sun and the environment with a full weekend of music and activities. Enjoy live bands, hayrides, children's activities and visit environmental groups' activities and displays. Paddle a canoe or kayak, shop vendors, munch festival foods, or relax in the Mad Anthony Brewery beer and wine garden. **Annual passes not honored on May 6 and May 7.**

Cost: \$5.00 Kids 11 and under free, Children's activity fees may apply

For more information: Email: [rzartman@allencountyparks.org](mailto:rzartman@allencountyparks.org) Call: 449-3186 Ron Zartman



### Trip to Totality - Solar Eclipse Travel Program

**August 19, Saturday - Introductory Program 10:00 AM Metea County Park**

**August 21, Monday - Bus trip to southern Illinois All Day - Leave from Fox Island County Park**



Includes bus travel, viewers, use of our filtered astronomical equipment, & education both during the trip & at a pre-trip program on August 19. We will be leaving early in the morning from Fox Island County Park on August 21, travel throughout the morning, set up at Giant City State Park in southern Illinois (depending on cloud cover), observe for a few hours, and head back to Fort Wayne. Our destination will have the longest totality of this entire eclipse - 2 minutes, 41.6 seconds. We need at least 30 people signed up & paid before July 20 to make a go of this. Bus capacity is limited to 40 for this once-in-a-lifetime experience.

Cost: \$100.00

Pre-register by: 7/20 Min: 30 Max: 40

To register or for more information: Email: [bdispenza@allencountyparks.org](mailto:bdispenza@allencountyparks.org) Call: 449-8619 Bob Dispenza

*Pre-School Discovery Hours — Fox Island*

**Preschool Discovery Hour Fox Island County Park**

**April 18, Tuesday 1:00 PM – 2:00 PM Animal Tracks**

Gather indoors to cast a plaster animal footprint to take home. Wear mud shoes and dress for the weather to take a hike to look for tracks and other animal signs. Finish with a snack.

**May 16, Tuesday 1:00 PM – 2:00 PM Tadpoles and Frogs**

Youngsters will enjoy a frog story and hunt outdoors for frogs and tadpoles. Wear mud shoes, bug spray and dress for the weather. Finish with a snack

**June 27, Tuesday 1:00 – 2:00 PM Bug Hunt**

We will learn a little about insects and “bugs”, and then grab some bug boxes to hunt for and catch some

Cost: \$ 3.00/child\$ 2.00/adult Pre-register by: 4/13 (Apr), 5/11 (May) & 6/22 (Jun) Min: 5 Max: 20

To register or for more information: Email: rzartman at allencountyparks.org Call: 449-3186 Ron Zartman



*Fox Kit Club Adventures*

**Fox Kit Club Adventures**

**Fox Island County Park**

**April 11, Tuesday 10:00 AM -11:00 AM – “Spring Floods”**

Meet a naturalist at the Fox Island Nature Center to learn about spring floods. Fees include a snack and drink for children

**May 9, Tuesday 10:00 AM - 11:00 AM “Celebrate the Sun”**

Meet a naturalist at the Fox Island Nature Center to learn about May sunshine

This program has been developed for pre-school children and their families or teachers. Meet a naturalist at the Fox Island Nature Center Fees include a snack and drink for the children. Pre-school teachers of paid attending students are free. Fees include free gate entrance for the day!

Cost: \$3.00 per child, \$2.00 per parent

Pre-register by: 4/6, and 5/4 respectively Min. 5 Max. 25

To register or for more information: Email: nhaley at allencountyparks.org Call: 449-3246 Natalie Haley



*Family Mystery Mornings at Metea*

**Family Mystery Mornings at Metea**

**Metea County Park**

**April 12 & May 10, Wednesdays 10:00 AM - 11:00AM**

These family nature programs are open to the public. Children two and under (are free) must be able to maintain a certain degree of quiet during the programs. Note that families are welcome to stay in the park as long as all adults pay at least the minimal \$2.00 park entry fee. One parent must stay with the other remaining children who are participating in the program due to state-required child supervisory laws. This allows the park naturalist to teach and not supervise children during the program. All children three and up are charged the same \$5.00 fee as the adults. Some of these programs are actively held outdoors and do require moderate hiking.

Cost: \$5 per person

Pre-register by: 4/7 & 5/5 respectively Min. 5 Max. 22

To register or for more information: Email: nhaley at allencountyparks.org Call: 449-3778 Natalie Haley



*Misc. Multi Date Programs and Training*



**Scrapbooking/Craft Nights**

**Fox Island County Park**

**April 21, Friday 6:00 PM - Midnight**

**May 19, Friday 6:00 PM - Midnight**

**No program in June or July**

Join us in scrapbooking memories to last a lifetime. For the May class we are also pairing up with Renee Pence & hosting a Tastefully Simple party at the same time! Pizza can be ordered for an additional \$5.00. Bring an optional snack to share (not required). Crafters may spend their time sewing, crafting or socializing for the same fees. Paid pre-registration is required five days in advance. Just send a check made out to Allen County Parks, with a note letting me know to reserve your spot! You will have until 24 hours prior to cancel and we will give you credit for a future session.

Cost: \$10.00 per class Pre-register by 4/17 & 5/15 respectively Min. 6 Max. 22

To register or for more information: Email:nhaley at allencountyparks.org Call: 449-3246 Natalie Haley

**Tai Chi**

**Fox Island County Park**

**April 12 – May 31, Wednesdays 6:00 PM – 7:00 PM**

Instructor Sandy Gebhard will teach the Sun Seventy-three form in this eight week Tai Chi class. These gentle, non-strenuous forms can be practiced by all. Be prepared to have fun as you join this light hearted group. Note: Registration accepted through 3rd week.

Cost: \$50.00 for eight weeks. \$8.00 drop-in fee.

Registration thru 4/7 Min: 10 Max: 25

To register or for more information: Email: rzartman at allencountyparks.org Call: 449-3186 Ron Zartman



*Nature Hikes and Programs*



**Night Hike**

**Metea County Park North on Hursh Road**

**April 13, Thursday 8:30 PM**

The late waning moon will light our path as we climb the rolling hills and swales of Metea North. We'll try conversing with the owls and tracking the deer, and maybe hear some amphibian songs. Be prepared for muddy trails.

Cost: \$2.00

Pre-register by:4/9 Min. 5 Max. 30

**Hike the Trails**

**Fox Island County Park**

**April 14, Friday 1:00 PM – 3:00 PM**

Hike the trails of Fox Island and see what is happening in the park. The hike will be about 2 miles in length and take in many interesting parts of Fox Island. Bring your cameras for unexpected photo ops.

Cost: \$2.00

Pre-register by: 4/10 Min:5 Max:25

To register or for more information:Email:jormiston at allencountyparks.org Call: 449-3180 Jeff Ormiston



### *Nature Hikes and Programs continued*

#### **Daylight to Dark Hike**

**Fox Island County Park**

**April 22 , Saturday 8:00 – 9:30 PM**

Many animals are active as the day ends. Enjoy a sunset as we watch for evening activities of birds and mammals. We will observe courtship flights of the American Woodcock at dusk. Then, return through darkness listening for owls, coyotes and amphibians.

Cost: \$2.00 / person

Pre-register by: 4/17 Min: 5 Max: 20

To register or for more information:Email: rzartman at allencountyparks.org Call:449-3186 Ron Zartman



#### **Mother's Day Hike**

**Metea County Park Nature Center**

**May 14, Sunday 2:00 PM**

Give your mother a living bouquet! Instead of delivering flowers to you, we'll deliver you to the flowers, as we see, smell and learn about our native wildflowers. The entire family is welcome.

Cost: \$2.00

Pre-register by: 5/10 Min: 5 Max: 30

To register or for more information: Email: bdispenza at allencountyparks.org Call: 449-8619 Bob Dispenza



#### **How to Raise a Monarch Butterfly**

**Fox Island County Park**

**June 4, Sunday 1:00 PM – 3:00: PM**

Learn about Monarch and other butterflies of Fox Island. Learn how to collect, raise, tag and release Monarch Butterflies. Leave with a "Monarch Nursery" to get started.

Cost: free w/annual pass or \$2.00 park admission

Pre-register by :5/31 Min: 5 Max: 20

To register or for more information: Email:jormiston at allencountyparks.org Call: 449-3180 Jeff Ormiston



Spring is nature's way of saying, 'Let's party!' Robin Williams

*Home School Programs - All classes are pre-register and pre-pay!*

**DNA – RNA and Proteins (Good for Homeschoolers)**

**Metea County Park Nature Center**

**April 10, Monday 9:30 AM - 11:30 AM**

Students will study the nucleic acids (DNA-RNA) The genetic code they contain, and the way in which that code is put into action.

Cost: Students \$5.00 – Adults \$2.00

Pre-register by: 3/3 Min. 5 Max. 15

To register or for more information: Email:rdivelbiss at allencountyparks.org Call: 449-3778 Ron Divelbiss



**Cell Growth – Mitosis and Cytokinesis (Good for Homeschoolers)**

**Metea County Park Nature Center**

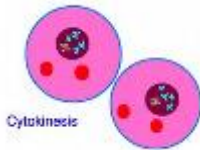
**April 17, Monday 9:30 AM -11:30 AM**

Students will examine how cells grow in size and increase in number, and why growth is so essential to living things.

Cost: Students \$5.00 – Adults \$2.00

Pre-register by:4/12 Min. 5 Max. 15

To register or for more information: Email:rdivelbiss at allencountyparks.org Call: 449-3778 Ron Divelbiss



**Intro to Genetics – Meiosis (Good for Homeschoolers)**

**Metea County Park Nature Center**

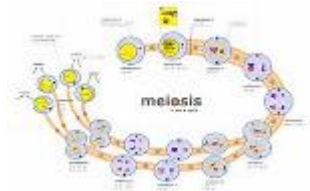
**April 24, Monday 9:30 AM -11:30 AM**

Students will explore the nature of biological inheritance.

Cost: Students \$5.00 – Adults \$2.00

Pre-register by: 3/17 Min. 5 Max. 15

To register or for more information: Email:rdivelbiss at allencountyparks.org Call: 449-3778 Ron Divelbiss



**Flowerless Plants (Good for Homeschoolers)**

**Metea County Park Nature Center**

**May 1, Monday 1:00 PM – 2:30 PM**

The nonflowering plants are the mosses and ferns.

Cost: Students \$5.00 – Adults \$2.00

Pre-register by: 4/28 Min. 5 Max. 15

To register or for more information: Email:rdivelbiss at allencountyparks.org Call: 449-3778 Ron Divelbiss



What the caterpillar calls the end of the world the master calls a butterfly. Richard Bach

*Home School Programs continued- All classes are pre-register and pre-pay!*



**Roots, Stems and Leaves (Good for Homeschoolers)**

**Metea County Park Nature Center**

**May 8, Monday 1:00 PM – 2:30 PM**

Vegetative parts.

Cost: Students \$5.00 – Adults \$2.00

Pre-register by: 5/3 Min. 5 Max. 15

To register or for more information: Email:rdivelbiss at allencountyparks.org Call: 449-3778 Ron Divelbiss

**Flowers, Fruits and Seeds (Good for Homeschoolers)**

**Metea County Park Nature Center**

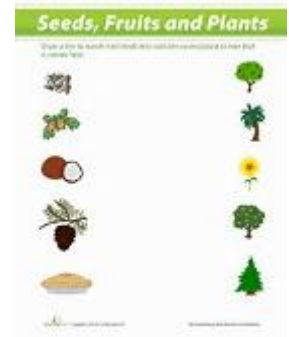
**May 15, Monday 1:00 PM – 2:30 PM**

Plant reproductive parts.

Cost: Students \$5.00 – Adults \$2.00

Pre-register by: 5/8 Min. 5 Max. 15

To register or for more information: Email:rdivelbiss at allencountyparks.org Call: 449-3778 Ron Divelbiss



**Summer Day Camps at Allen County Parks**

**Fox Island AND Metea County Parks**

**June 20–24, 9:30 AM–4:30 PM Fox Fish & Canoe Camp (Fox Island)**

**June 27–July 1, 9:30 AM–4:30 PM Fox Survival Camp (Fox Island)**

**July 11-15, 9:30 AM–4:30 PM Canoe Camp 1 (Metea)**

**July 18-22, 9:30 AM–4:30 PM Canoe Camp 2 (Metea)**

Cost: \$100.00 per week per camper

Pre-register by 6/5 for all camps Min: 10 Max: 20

Our Day Camps are for children 6-12 years of age. Your child will learn to canoe, fish, survival skills, float down a creek, back country cooking and much more send them to one our camps. We swim daily as well. More information available on our website under Summer Day Camps!!

To register or for more information: Email:nhaley at allencountyparks.org Call: 449-3778 Natalie Haley



We are on the web at:  
allencountyparks.org





*“Moonshadow” continued from page 1*

The following will protect your eyes: items labeled as solar filters for direct sun viewing, telescopic sun filters that attach to the objective (big) end of a telescope, and shade 14 welder’s glass. Viewers must meet the ISO 12312-2 international standard. Scratched or damaged filters are not safe. Indirect viewing (projecting through a telescope or pinhole camera) is safe as long as it is arranged so no one can accidentally look through the telescope. Don’t take chances with your eyes. Most eclipse viewers will show the sun as blue or orange, and welder’s glass will show green. Don’t expect to be able to see anything besides the sun through these. Put filters up to your eyes BEFORE you look at the sun, and only remove the filter AFTER you have looked away.

In Fort Wayne, start of partial eclipse will be about noon, maximum eclipse about 1:25 PM, with partial ending about 2:45. Here there will be a deep partial eclipse only – it will not be safe to view at any time without filters. The next US solar eclipses seen from Fort Wayne will be a partial in June of 2021 and a total in April 2024 – totality will be just a few miles south of Fort Wayne.



If you want to see the total eclipse, join us on our Trip to Totality – August 21. Program fee of \$100 includes bus travel, viewers, use of our filtered astronomical equipment, and education both during the trip and at a pre-trip program on August 19, 10 AM at Metea County Park. We will be leaving early in the morning from Fox Island County Park on August 21, travel throughout the morning, set up at Giant City State Park in southern Illinois (depending on cloud cover), observe for a few hours, and head back to Fort Wayne. Our destination will have the longest totality of this entire eclipse – 2 minutes, 41.6 seconds. We need at least 30 people signed up and paid before July 20 to make a go of this, so don’t wait to save your space. Bus capacity is limited to 40 for this once-in-a-lifetime experience. Contact Bob Dispenza for more information: 449-8619 or metea@allencountyparks.org



***Our congratulations to Deana Davis, Allen County Parks Maintenance Foreperson on a milestone anniversary with the Department!! 20 years of service!! We appreciate all your hard work and dedication!!***

TEACHERS .....

## Discovery Biobox on TREES!!!



Don't have the time for a field trip and not sure when in the next two weeks you would have time for a naturalist to visit your class. Check out this idea, borrow our Tree Bio Box and when time allows in a 2 week period do your program! **ITS FREE!!!** This box includes books and curriculum binder of activities with all the supplies in one box. All you need is one tree! Call 449-3180 to check the entire box out for 2 weeks FREE! This box is available for check out at Fox Island County Park ONLY! Complete with over 30 books, posters, tree cookies, leaf identification kit, magnifying glasses and much more. *A special thanks to one of our supporting organizations, the Fox Island Alliance for this awesome teaching tool!!!*

### Park Hours

DST Starts to Memorial Day 9:00 AM—7:00 PM  
Memorial Day—Labor Day 9:00 AM—9:00pm  
Nature Centers at Fox Island and Metea County Parks  
are open 10:00 AM - 6:00 PM Mon—Fri  
9:00 AM - 6:00 PM Sat. & Sun

### Rental Facilities

Allen County Parks can provide an excellent alternative for your next special event, party, conference, retreat, meeting, wedding, reception or memorial service.  
For more information check our website or contact  
[rentals@allencountyparks.org](mailto:rentals@allencountyparks.org)

Our Mission: "To establish and manage a permanent park system incorporating conservation, education, outdoor values and nature preservation, and to provide recreational opportunities for the people of Allen County within this structure"

Allen County does not discriminate because of disability in the admission to, or treatment or employment in, its programs or activities. The Human Resources Director has been designated to coordinate compliance with nondiscrimination requirements contained in Section 35.107 of the Department of Justice regulations. Information concerning the provisions of the Americans with Disabilities Act, and the rights provided therein, and Allen County's ADA policy is available from the ADA Coordinator. Suggestions on how the County can better meet the needs of persons with disabilities may be submitted to the ADA Coordinator at:

Human Resources Department 200 E. Berry Street, Suite 380, Fort Wayne, In. 46802 or by phone at (260)449-7217.