



The Wild Grapevine

Vol. 21 No. 2 April 2025

The Wild Grapevine will provide you with nature-related articles and upcoming event information four times per year. All annual pass holders will receive this newsletter free as part of their benefits. Send your email address to metea@allencountyparks.org for free e-mailed copies.

Allen County Parks website:
www.allencountyparks.org

Fox Island Alliance website:
www.foxislandalliance.org

Friends of Metea website:
friendsofmeteaFB

Your Allen County Parks

Fox Island County Park, 7324 Yohne Road, southwest Fort Wayne (260) 449-3180

Metea County Park, 8401 Union Chapel Road, at State Route 1, Leo-Cedarville (260) 449-3777

Payton County Park, 13928 Dunton Rd. just east of Hometown between Gump and Hathaway Roads

Cook’s Landing County Park, corner of Shoaff and Coldwater Roads

Deer Run Wilderness Area – near the NE corner of Allen County, access by permission only

Allen County Hanauer Reserve – Easterday Road rental facility



www.nistem.org

Allen County Parks is a partner in the NISTEM network



www.allencountytrailblazers.org

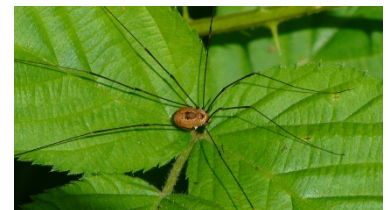
Allen County Parks is a partner in Allen County Trailblazers

Nature misconceptions

By Bob Dispenza, Park and Education Manager, Allen County Parks

Daddy-long-legs (aka harvestmen, harvesters, harvest spiders)

Opilionids (the order of animals these are) have no venom glands, so they cannot possibly be “the most poisonous spider in the world” as the internet says. They are arachnids, but not spiders. Most species are omnivores or scavengers, and in some the male cares for the eggs. Many will defend themselves with chemical secretions.



Baby birds

By the time a bird is ready to leave the nest and fly, it is full grown, and sometimes larger than the parents except for feather length. Small red birds at your feeder do not grow up into big red birds. Small owls (such as screech owls) do not grow up into great horned owls, no matter how much they look like them.

Screech owl color

Screech owls come in mainly two color variations – red and gray. The colors do not indicate anything about sex or age. A red will always be a red and a gray will always be a gray.





Brown recluse/black widow in NE Indiana

Neither of these medically-significant spiders is native to northern Indiana. The only way they are found here is by human transport. Any spider that looks like them around here is something else and likely harmless. Even where the spiders are native (southern Indiana, southwest Ohio, south and west of those areas) bites are rare and almost never fatal, though the spiders can be relatively common. I once shared the small gatehouse at Theodore Roosevelt National Park with a large family of black widows for a summer without ill effect.

Bat blindness

Bats are not blind, but actually see well, especially in the dark, but human color vision is better.

Making maple syrup

Much as I would like it to be so, when you tap a maple tree, syrup does not come out. The sap has the sweetness of a tablespoon of sugar dissolved in a gallon of water. About 40 gallons of sap has to be boiled to make one gallon of syrup. Most maples can be tapped, though some have better sap than others. Syrup can also be made from walnut trees, hickories, birches and some others.

Birds sleeping in their nests at night

On Sesame Street, Big Bird went to his nest to sleep every night. Real birds don't do that. Most birds use their nests to raise babies but don't live or sleep there, unless sitting on eggs or young.

First robin/bluebird of spring

Though often taken as a sign of impending spring, we have robins and bluebirds here all winter. They will switch their diet from insects and worms to tree fruits and some feeder foods, and some will migrate, but we have them around all year. Maybe a better sign of spring is the return of vultures (often called buzzards). They eat dead stuff, and it can't be frozen or they will starve. So their life depends on arriving with warmer weather that will thaw their food.

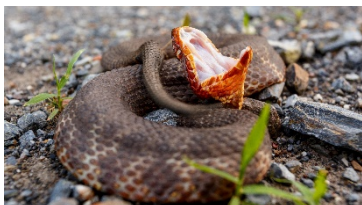
Barn owl vs barred owl

Both are owls that live here. Their names are similar, but the owls are very different. Barred owls (named after the brown bar coloration on their breast feathers) live in forests, while barn owls favor – you guessed it – barns. Barred owls have no feather tufts on their heads (like horned or screech owls) and have brown eyes. Their coloration is overall brown. Barn owls are light colored, almost white sometimes, with a rusty tan back. Barred owls usually hoot eight times (who cooks for you, who cooks for you all) and are relatively common. Barn owls (sometimes called monkey-faced owls) have a raspy screech and are endangered in Indiana.



Sharks/alligators/bears

Sharks and alligators live nowhere near Indiana except at a zoo. Black bears used to live here, but were all killed off (extirpated) long ago. A few will occasionally wander in from neighboring states, but they usually don't last long.



Water moccasins

Here in northern Indiana we have several species of water snakes, which can be vicious if handled, but none are venomous. The nearest populations of water moccasins/cottonmouths are along the Ohio River down near Evansville. A long way from here.

Weather causing fall changes in plants and animals

While it seems logical that colder weather will make plants lose their leaves and animals migrate, hibernate or grow winter coats, temperatures are only one factor, and not the most important. I have lived long enough to see warm

temperature all the way into December, but the leaves still turn and fall and animals all still prepare for winter. The most important factor is actually day length – how long it stays light. As the days get shorter, chemical pathways in plants and in the brains of animals trigger changes in foliage (withdrawing resources from leaves in preparation to dropping them) and animal behavior (from migration urges to adding fat before hibernation to growing thicker fur). Successful living organisms are not fooled by anything so changeable and unreliable as weather. Day length is a more reliable indicator of coming winter.

Touching a baby bird will cause its mother to abandon it

Birds have no sense of smell (with a few exceptions), so they would have no way of knowing if nestlings had been touched. It’s safe to return nestlings to their nest – if you’re sure you have the right nest. Fledgling birds often leave the nest before they are ready to fly. The above is NOT true for mammals, whose sense of smell is much keener.

Touching a toad gives you warts

Human warts are caused by viruses. Toad warts are a defense mechanism to make them taste bad.



Wise owls

Owls are no more intelligent than any other bird. They just have the good sense to look like us, with their eyes facing forward to get better binocular vision, which is useful for a predator.



Vulture and eagle

Turkey vultures soar with their wings in a slight V, eagles soar with their wings flat. Mature vultures are black with gray wing feathers and a pink head, while mature eagles have the white head and tail. Immature vultures have gray heads, and immature eagles have a dark brown head and tail.

Upcoming Programs for Spring

Program fees are usually \$2.00 per person unless otherwise stated, and are used to provide operating funds (which are not supported by tax revenue) for Allen County Parks. Most programs require pre-registration to allow resource and staff allocation planning. There may be requirements for a minimum number registered to offer the program. You will be notified at least 1 day before the program if it has been cancelled due to minimum registrations not being met.

Scavenger Hunt		Metea County Park
March 31 to April 5	All Day	Nature Center
Pick up a scavenger hunt from the nature center and go out on the trails to complete it. Once you complete it bring it back for a special prize! Scavenger hunts at easy and hard difficulty.	Free with admission	For more information: Email: sschrock@allencountyparks.org Call: 449-3778 Sydney Schrock

Spring Poetry Walk		Metea County Park
April 1 to April 30	All Day	Trails
Come out to Metea County Park and grab a map to hike the trails and read poetry from local poets! Enjoy spring through these literary works of art all about new life and rebirth.	Free with admission	For more information: Email: sschrock@allencountyparks.org Call: 449-3778 Sydney Schrock

Preschool Story Time & Hike		Fox Island County Park
April 1, Tuesday	10 AM	Nature Center
Join environmental educator, Eva, for a nature themed story time about “P is for Plant.” Songs, a story, and a hike are included. Call or FB message to register.	Cost: \$3/person Pre-register by: 3/27 Min. 5 Max. --	To register or for more information: Email: ewebb@allencountyparks.org Call: 449-3184 Eva Webb

Afternoon Hike		Fox Island County Park
April 1, Tuesday	1:30PM	Nature Center
Meet at the nature center. The environmental educator will lead a hike on the dune. Friendly dogs on a leash are welcome. Call or FB message to register.	Cost: Free w/ Park entry or \$3 Pre-register by: 3/30 Min. 5 Max. 20	To register or for more information: Email: ewebb@allencountyparks.org Call: 449-3184 Eva Webb

Pond Explorers		Metea County Park
April 2, Wednesday	1:30 PM – 2:30 PM	Meet at Beach
Come join Sydney and see what is in our pond here at the park. We will be looking at frogs, crayfish, macro and micro invertebrates. Come bring your family and explore the pond with us.	Free with admission	For more information: Email: sschrock@allencountyparks.org Call: 449-3778 Sydney Schrock

Signs of Spring: Kids Nature Hike		Metea County Park
April 3, Thursday	1:30 PM – 2:30 PM	Meet at Nature Center
Celebrate the arrival of spring with a fun and interactive hike designed for kids and families! On this hike we will be searching for early spring sights, sounds, and smells like budding trees, singing birds, and animal tracks. This engaging adventure combines nature discovery with playful activities to get kids moving and exploring the great outdoors.	Free with admission	For more information: Email: sschrock@allencountyparks.org Call: 449-3778 Sydney Schrock

Sensory Night Hike		Metea County Park
April 4, Friday	8:30 PM – 9:30 PM	Meet at Nature Center
Come and enjoy the forest at night as we test all of our senses, sight, hearing, smell, taste, and touch. This hike will be completely dark to immerse ourselves in the experience of our nocturnal animals. Great for families and kids of all ages.	Cost: \$3 Max. 20 Preregister by 4/2	To register or for more information: Email: sschrock@allencountyparks.org Call: 449-3778 Sydney Schrock

Life in a Vernal Pool		Metea County Park
April 5, Saturday	1 PM – 2 PM	Meet at Nature Center
Discover the hidden world of vernal pools! These seasonal wetlands are teeming with fascinating creatures like frogs and salamanders. Join us to explore this unique habitat and learn why it's vital for local wildlife.	Free with admission	For more information: Email: sschrock@allencountyparks.org Call: 449-3778 Sydney Schrock

Afternoon Hike		Fox Island County Park
April 8, Tuesday	1:30 PM	Nature Center
Meet at the nature center. The environmental educator will lead a hike on the dune. Friendly dogs on a leash are welcome. Call or FB message to register.	Cost: Park entry fee (\$3) or showing park pass Pre-register by: 4/6 Min. 5 Max. 20	To register or for more information: Email: ewebb@allencountyparks.org Call: 449-3184 Eva Webb

Fox Kit Club Spring Adventures		Fox Island County Park
April 9, May 7, Wednesday	10:00AM-11:00AM	Nature Center
This program is geared for preschool-aged children and their guardian. Meet a park manager at the Fox Island Nature Center. April: “amphibian kindergarten”, May: “wildflowers”.	Cost: \$3.00 per person Pre-register by: (5 days before program)	To register or for more information: Email: foxisland@allencountyparks.org Call: 449-3246 Natalie Haley

Nature Story Time		Metea County Park
April 9, Wednesday	10:30 AM	
Frogs Join Jennifer from the Grabill Branch Library and Bob Dispenza from Metea County Park as we learn about the great outdoors! Each session will focus on a nature theme with stories, activities and hands-on learning. We'll meet in the Nature Center then do a little outdoor exploring if weather permits.	Cost: FREE Pre-register by: 4/5	To register or for more information: https://acpl.libnet.info/event/ or Email: bdispenza@allencountyparks.org Call: 449-8619 Bob Dispenza

Spring Hike Series		Metea County Park
Thursday, April 10, 17, 24 May 1, 8, 15, 22, 29	1:30 PM – 2:30 PM	Meet at Nature Center
Come out every Thursday in the month of April and enjoy the spring weather with other nature lovers. Each week we will cover a different topic regarding the spring emergence of life. Everyone welcome including dogs.	Free with admission	For more information: Email: sschrock@allencountyparks.org Call: 449-3778 Sydney Schrock

Mid-Day Drum Circle		Fox Island County Park
April 11, Friday	1:30 PM	VDWOB
Come to the Vera Dulin Wildlife Observation Building to partake in a mid-day community drum circle. Bring a drum if you have one. But if you don't have one, come anyway, as there are drums and percussion instruments available to borrow. If the weather is good, we'll be outside. Call or FB message to register.	Cost: Park entry (\$3) or park pass Pre-register by: 4/10 Min. 5 Max. 25	To register or for more information: Email: ewebb@allencountyparks.org Call: 449-3184 Eva Webb

Scrap/Craft Night with the Ladies of Fox Island		Fox Island County Park
Apr. 11, May 23, July 25, Aug. 8, Sept. 12, Oct. 10, Nov. 7 & Dec. 5, 2025, Fridays	5:00PM-11:00PM	Nature Center
This program is developed for adult women who need an evening to socialize with other women while crafting or scrapbooking. Free room rental and some refreshments are included. We also order Pizza Hut pizza – splitting the cost for that meal not to exceed \$5.00 per person. Many bring a snack to share. The pizza and snacks are 100% optional. You must pre-register five days in advance for this class and to hold your spot. Registration is first-come, first-serve.	Cost: \$10.00 per class Pre-register by: (5 days before program) Min. 5 Max. 22	To register or for more information: Email: foxisland@allencountyparks.org Call: 449-3246, 449-3180 Natalie Haley

Salamander Search		Metea County Park
April 12, Saturday	1 PM – 2 PM	Meet at Nature Center
Slip on your boots and join us on a search for secretive salamanders! We'll explore their forest hideouts, uncover their incredible adaptations, and learn how these elusive amphibians survive in our local ecosystems.	Free with admission	For more information: Email: sschrock@allencountyparks.org Call: 449-3778 Sydney Schrock

Full Pink Moon Drum Circle		Fox Island County Park
April 12, Saturday	6 PM	VDWOB
Drum with us on this Full Pink Moon evening. We'll be using our senses, find out more information about this particular full moon, and make rhythms together. Call or FB message to register.	Cost: Free w/ park pass, or \$3/person Pre-register by: 4/9 Min. 3 Max. 30	To register or for more information: Email: ewebb@allencountyparks.org Call: 449-3184 Eva Webb

Full Egg Moon Hike		Metea County Park Nature Center
April 12, Saturday	8:30 PM	
Birds might be on their nests for the night during our full Egg Moon hike, but bats and glowworms might be out and about. We might visit the local chicken flock to see if they have any eggs.	Cost: \$3.00 Pre-register by: 4/9 Min. 5 Max. 45	To register or for more information: Email: bdispenza@allencountyparks.org Call: 449-8619 Bob Dispenza

A Study of the Woodcock and April's Full Moon		Fox Island County Park
April 13, Sunday	5:30PM-7:30PM	Nature Center
Join a park manager and saunter into Fox Island's oak tree field to find and observe woodcock birds by moonlight.	Cost: \$3:00 per person Pre-register by: 4/9 Min. 5 Max. 22	To register or for more information: Email: foxisland@allencountyparks.org Call: 449-3246 Natalie Haley

Library Partnership Preschool Story Time		Waynedale Library branch
April 14, Monday	10:30 AM	
S is for Spring Wildflowers. Bring your preschooler for a story, some songs, and movement.	Cost: free	To register or for more information: Email: ewebb@allencountyparks.org Call: 449-3184 Eva Webb

Afternoon Hike		Fox Island County Park
April 15, Tuesday	1:30 PM	Nature Center
Meet at the nature center. The environmental educator will lead a hike on the dune. Friendly dogs on a leash are welcome. Call or FB message to register.	Cost: \$3/person or free w/ park pass Pre-register by: 4/12 Min. 5 Max. 30	To register or for more information: Email: ewebb@allencountyparks.org Call: 449-3184 Eva Webb

Monthly Birding Walk		Fox Island County Park
April 19, Saturday	9:05 AM	VDWOB
Join fellow birders for a birding walk. All levels of experience welcome. Call or FB message to register.	Cost: \$3/person or FREE w/ Park Pass Pre-register by: 4/16 Min. 5	To register or for more information: Email: ewebb@allencountyparks.org Call: 449-3184 Eva Webb

Women's Monthly Hike		Fox Island County Park
April 19, Saturday	11 AM	Nature Center
Join environmental educator, Eva Webb, on a women's only hike. Bring a friend or come meet a new one. Call or FB message Fox Island County Park to reserve your spot.	Cost: \$3 or FREE w/ park pass Pre-register by: 4/16 Min. 5 Max. 25	To register or for more information: Email: ewebb@allencountyparks.org Call: 449-3184 Eva Webb

Winter Art Series: Build a Bird Nest Challenge		Metea County Park
April 19, Saturday	1 PM – 2 PM	Nature Center Basement
On the 3 rd Saturday of the month from Jan to April join us to make art or do a craft. Come and challenge yourself to see if you can make a usable bird nest. Using natural items, we will make our own bird's nest to determine if we are as skillful as birds at making nests.	Cost: \$3 Max:25 Pre-register by: 4/17	To register or for more information: Email: sschrock@allencountyparks.org Call: 449-3778 Sydney Schrock

Monthly Dune Hike		Fox Island County Park
April 19, Saturday	1 PM	Nature Center
Join in for a hike on the dune led by the environmental educator, Eva. Bring a friend or family member or come alone and meet a new friend on a lovely spring hike. Call or FB message to register.	\$3/person or FREE w/ park pass Pre-register by: 4/16 Min. 5 Max. 25	To register or for more information: Email: ewebb@allencountyparks.org Call: 449-3184 Eva Webb

Library Partnership Preschool Story & Hike		Fox Island County Park
April 21, Monday	10:30 PM	Nature Center
Bring your preschooler for a nature themed story time on S is for Spring Wildflowers. There will be songs, a story, and a hike. This is part 2 of the story time partnership with the Waynedale Public Library branch.	Cost: \$3/child Pre-register by: 4/18 Min. 5 Max. 30	To register or for more information: Email: ewebb@allencountyparks.org Call: 449-3184 Eva Webb

Afternoon Hike		Fox Island County Park
April 22, Tuesday	1:30 PM	Nature Center
Meet at the nature center. The environmental educator will lead a hike on the dune. Friendly dogs on a leash are welcome. Call or FB message to register.	Cost: \$3 Pre-register by: 4/21 Min. 5 Max. 30	To register or for more information: Email: ewebb@allencountyparks.org Call: 449-3184 Eva Webb

Volunteer Day at the Island		Fox Island County Park
April 23 and May 14, 2025, Wednesdays	10:00AM-2:00PM	Nature Center
Various volunteer projects for the Island include wiping down the nature center, redoing exhibits, weeding gardens, painting/staining, mulching and planting natives. Show up prepared to work and bring your lunch. We love to work, but we also love to socialize! Please pre-register so we know what we can get done as a group.	Cost: FREE with park admission Pre-register by: (5 days before program) Min. 5 Max. N/A	To register or for more information: Email: foxisland@allencountyparks.org Call: 449-3246, 449-3180 Natalie Haley

Spring Hike with ASL Interpretation		Metea County Park Nature Center
April 25, Friday	7 PM	
Join Park and Education Manager Bob Dispenza and ASL Interpreter Garth Sponseller as we walk the trails looking for spring wildflowers and signs of our local wildlife. All are welcome. "The beauties of nature ... can be more readily understood, more naturally appreciated, through the medium of signs rather than words because of their descriptive aptness." - Theophilus Hope D'Estrella	Cost: \$3.00 Pre-register by: 4/20 Min. 5 Max. 45	To register or for more information: Email: bdispenza@allencountyparks.org Call: 449-8619 Bob Dispenza

Afternoon Hike		Fox Island County Park
April 29, Tuesday	1:30 PM	Nature Center
Meet at the nature center. The environmental educator will lead a hike on the dune. Friendly dogs on a leash are welcome. Call or FB message to register.	Cost: \$3 Pre-register by: 4/28 Min. 5 Max. --	To register or for more information: Email: ewebb@allencountyparks.org Call: 449-3184 Eva Webb

Spring Wildflower Hike		Metea County Park
May 3, Saturday	1 PM – 2 PM	Meet at Nature Center
Spring has sprung! Step into the beauty of spring as we explore the trails in search of vibrant wildflowers! From delicate trilliums to cheerful spring beauties, we'll learn to identify these seasonal blooms and uncover the fascinating stories behind them.	Free with admission	For more information: Email: sschrock@allencountyparks.org Call: 449-3778 Sydney Schrock

Preschool Storytime & Hike		Fox Island County Park
May 6, Tuesday	10 AM	Nature Center
C is for Camping. Join environmental educator, Eva Webb for an interactive learning experience through songs, story and hike about C is for Camping. Come dressed for the weather. Call or FB Message Fox Island County Park to reserve your spot.	Cost: \$3 Pre-register by: 5/5 Min. 5 Max. --	To register or for more information: Email: ewebb@allencountyparks.org Call: 449-3184 Eva Webb

Afternoon Hike		Fox Island County Park
May 6, Tuesday	1:30 PM	Nature Center
Meet at the nature center. The environmental educator will lead a hike on the dune. Friendly dogs on a leash are welcome. Call or FB message to register.	Cost: \$3/person or FREE w/ park pass Pre-register by 5/5	To register or for more information: Email: ewebb@allencountyparks.org Call: 449-3184 Eva Webb

Mid-Day Drum Circle		Fox Island County Park
May 9, Friday	1:30 PM	VDWOB
Join environmental educator, Eva Webb for a community drum circle in the Vera Dulin Wildlife Observation Building. Call or FB Message Fox Island County Park to reserve your spot. Come, relax, drum, build community, and learn about the natural world.	Cost: \$3 or FREE w/ Park Pass Pre-register by: 5/8 Min. 5 Max. --	To register or for more information: Email: ewebb@allencountyparks.org Call: 449-3184 Eva Webb

Invasive Plant Pull		Metea County Park
May 10, Saturday	9 AM – 12 PM	Meet at Nature Center
Make a difference at Metea County Park by joining us for an invasive plant pull! You can help remove harmful species like garlic mustard to protect native plants and wildlife. This hands-on conservation project is a great way to enjoy the outdoors while earning volunteer hours for school, clubs, or community service requirements.	Free	For more information: Email: sschrock@allencountyparks.org Call: 449-3778 Sydney Schrock

Women's Hike		Metea County Park
May 10, Saturday	2 PM – 3 PM	Meet at Nature Center
Women take a break and come out to Metea County Park as we go on a mindfulness hike through the forest. Enjoy and experience nature with your senses. Dogs are welcome on this 1.5-mile hike	Free with admission	For more information: Email: sschrock@allencountyparks.org Call: 449-3778 Sydney Schrock

Mother's Day Hike		Metea County Park Nature Center
May 11, Sunday	7 PM	
Give your mother a living bouquet! Instead of delivering flowers to you, we'll deliver you to the flowers, as we see, smell and learn about our native wildflowers. The entire family is welcome.	Cost: \$3.00 Pre-register by: 5/8 Min. 5 Max. 25	To register or for more information: Email: bdispenza@allencountyparks.org Call: 449-8619 Bob Dispenza

Full Flower Moon Hike		Metea County Park Nature Center
May 11, Sunday	9 PM	
Daytime flowers might be folded up for the night during our full Flower Moon hike, but bats might be winging overhead while glowworms light up the path. Could be magical (and muddy, due to Indiana weather). Possibility of seeing Indiana's state insect!	Cost: \$3.00 Pre-register by: 5/21 Min. 5 Max. 45	To register or for more information: Email: bdispenza@allencountyparks.org Call: 449-8619 Bob Dispenza

Full "Flower" Moon Drum Circle		Fox Island County Park
May 12, Monday	6 PM	VDWOB
Bring a drum if you want. Drums will be provided. Come learn about the Full Flower Moon and drum with others. Call or FB message to register.	Cost: \$3 or FREE w/ Park Pass Pre-register by: 5/10	To register or for more information: Email: ewebb@allencountyparks.org Call: 449-3184 Eva Webb

Full Flower Moon Hike		Fox Island County Park
May 12, Monday	7:15 PM	Nature Center
Why is this full moon called the Flower Moon? Come find out while hiking in the moonlight. Call or FB message to register.	Cost: \$3 or FREE w/ Park Pass Pre-register by: 5/8 Min. 5 Max. 40	To register or for more information: Email: ewebb@allencountyparks.org Call: 449-3184 Eva Webb

Afternoon Hike		Fox Island County Park
May 13, Tuesday	1:30PM	Nature Center
Meet at the nature center. The environmental educator will lead a hike on the dune. Friendly dogs on a leash are welcome. Call or FB message to register.	Cost: \$3 or FREE w/ Park Pass Pre-register by: 5/12 Min. 5 Max. 30	To register or for more information: Email: ewebb@allencountyparks.org Call: 449-3184 Eva Webb

Preschool Storytime		Aboite Public Library
May 14, Wednesday	10:15 AM	
W is for Wetland. Join the environmental educator, Eva, for a nature themed story time with songs, a story, and movement.	Cost: FREE Pre-register by: 5/13 Min. 5 Max. 20	To register or for more information: Email: ewebb@allencountyparks.org Call: 449-3184 Eva Webb

Nature Story Time		Metea County Park Nature Center
May 14, Wednesday	10:30 AM	
Wildflowers Join Jennifer from the Grabill Branch Library and Bob Dispenza from Metea County Park as we learn about the great outdoors! Each session will focus on a nature theme with stories, activities and hands-on learning. We'll meet in the Nature Center then do a little outdoor exploring if weather permits.	Cost: FREE Pre-register by: 5/11	To register or for more information: https://acpl.libnet.info/event/ or Email: bdispenza@allencountyparks.org Call: 449-8619 Bob Dispenza

Owl Prowl		Metea County Park
May 16, Friday	9 PM- 10 PM	Meet at Nature Center
Come and learn about these mysterious predators of the night as we go on an easy hike listening for these amazing predators. This is a hike with no lights to deter less owls. Great for families.	Cost: \$3 Max. 25 Preregister by 5/14	To register or for more information: Email: sschrock@allencountyparks.org Call: 449-3778 Sydney Schrock

Women's Monthly Hike		Fox Island County Park
May 17, Saturday	11 AM	Nature Center
Join environmental educator, Eva Webb, on a women's only hike. Bring a friend or come meet a new one. Call or FB message Fox Island County Park to reserve your spot.	Cost: \$3 or FREE w/ Park Pass Pre-register by: 5/16 Min. 5 Max. 25	To register or for more information: Email: ewebb@allencountyparks.org Call: 449-3184 Eva Webb

Creek Stomp		Metea County Park
May 17, Saturday	1 PM – 2 PM	Meet at Nature Center
Let's go and splash in the creek! We will learn about macroinvertebrates and determine the health of the Cedar Creek that runs through Metea. Bring your boots and come exploring the small world of macroinvertebrates. Great for kids and families.	Free with admission	For more information: Email: sschrock@allencountyparks.org Call: 449-3778 Sydney Schrock

Monthly Dune Hike		Fox Island County Park
May 17, Saturday	1 PM	Nature Center
Join in for a hike on the dune led by the environmental educator, Eva. Bring a friend or family member or come alone and meet a new friend on a lovely spring hike. Call or FB message to register.	Cost: \$3 or FREE w/ Park Pass Pre-register by: 5/15 Min. 5 Max. 40	To register or for more information: Email: ewebb@allencountyparks.org Call: 449-3184 Eva Webb

Monthly Birding Walk		Fox Island County Park
May 17, Saturday	9:05 PM	VDWOB
Join fellow birders for a birding walk. All levels of experience welcome. Call or FB message to register.	Cost: \$3/person or FREE w/ park pass Pre-register by 5/16	To register or for more information: Email: ewebb@allcountyparks.org Call: 449-3184 Eva Webb

Afternoon Hike		Fox Island County Park
May 20, Tuesday	1:30 PM	Nature Center
Meet at the nature center. The environmental educator will lead a hike on the dune. Friendly dogs on a leash are welcome. Call or FB message to register.	Cost: \$3 or FREE w/ Park Pass Pre-register by: 5/18 Min. 5	To register or for more information: Email: ewebb@allcountyparks.org Call: 449-3184 Eva Webb

Preschool Nature Story Time & Hike		Fox Island County Park
May 21, Wednesday	10:30 AM	Nature Center
Join environmental educator, Eva Webb for a nature themed story time about W is for Wetland. This is part 2 of the theme and will include new material and a hike. Call or FB message to register.	Cost: \$3 or FREE w/ Park Pass Pre-register by: 5/20 Min. 5 Max. 20	To register or for more information: Email: ewebb@allcountyparks.org Call: 449-3184 Eva Webb

Pollinator Power		Metea County Park
May 24, Saturday	1 PM – 2 PM	Meet at Nature Center
Bees, butterflies, and beetles—oh my! Learn how these powerful pollinators keep our ecosystems thriving. Discover ways you can support them and even plant your own pollinator-friendly garden.	Free with admission	For more information: Email: sschrock@allcountyparks.org Call: 449-3778 Sydney Schrock

Afternoon Hike		Fox Island County Park
May 27, Tuesday	1:30PM	Nature Center
Meet at the nature center. The environmental educator will lead a hike on the dune. Friendly dogs on a leash are welcome. Call or FB message to register.	Cost: \$3/person; free w/ park pass Pre-register by: 5/26 Min. 5 Max. 40	To register or for more information: Email: ewebb@allcountyparks.org Call: 449-3184 Eva Webb

Fantastic Fungi		Metea County Park
May 31, Saturday	1 PM -2 PM	Meet at Nature Center
Discover the fascinating world of mushrooms and their role in the forest ecosystem! During this guided hike we will search for wild fungi, learn about their unique adaptations, and uncover the important connections they have with plants and wildlife.	Free with admission	For more information: Email: sschrock@allcountyparks.org Call: 449-3778 Sydney Schrock

Afternoon Hike		Fox Island County Park
June 3, Tuesday	1:30 PM	Nature Center
Meet at the nature center. The environmental educator will lead a hike on the dune. Friendly dogs on a leash are welcome. Call or FB message to register.	Cost: \$3 or FREE w/ Park Pass Pre-register by: 6/1 Min. 5 Max. 72	To register or for more information: Email: ewebb@allcountyparks.org Call: 449-3184 Eva Webb

Nature Camp		Fox Island County Park
June 9-13	9:30 a.m. – 11:30 a.m.	Nature Center
Register with Sarah Maloy.		To register or for more information: Email: Sarah Maloy: smmindiana@gmail.com

Nature Story Time		Metea County Park Nature Center
June 11, Wednesday	10:30 AM	
Birds Join Jennifer from the Grabill Branch Library and Bob Dispenza from Metea County Park as we learn about the great outdoors! Each session will focus on a nature theme with stories, activities and hands-on learning. We'll meet in the Nature Center then do a little outdoor exploring if weather permits.	Cost: FREE Pre-register by: 6/6	To register or for more information: https://acpl.libnet.info/event/ or Email: bdispenza@allencountyparks.org Call: 449-8619 Bob Dispenza
Full Strawberry Moon Hike		Metea County Park Nature Center
June 11, Wednesday	9:30 PM	
Ripening strawberries and glowing insects might both be found on our hike. Though our wild strawberries are mostly small and tasteless, our hike through the late spring night woods should be neither.	Cost: \$3.00 Pre-register by: 6/8 Min. 5 Max. 25	To register or for more information: Email: bdispenza@allencountyparks.org Call: 449-8619 Bob Dispenza
Afternoon Hike		Fox Island County Park
June 17, Tuesday	1:45 PM	Nature Center
Meet at the nature center. The environmental educator will lead a hike on the dune. Friendly dogs on a leash are welcome. Call or FB message to register.	Cost: \$3 or FREE w/ Park Pass Pre-register by: 6/16 Min. 5 Max. 40	To register or for more information: Email: ewebb@allencountyparks.org Call: 449-3184 Eva Webb
Summer Poetry Walk		Fox Island County Park
June 20 – September 20	9 AM	Nature Center
Walk a trail that has poetry about nature in the summer time.	Cost: \$3/person or FREE w/ Park Pass	To register or for more information: Email: ewebb@allencountyparks.org Call: 449-3184 Eva Webb
Summer Solstice Hike		Metea County Park Nature Center
June 20, Friday	9:30 PM	
Enjoy an evening hike on the longest day of the year - 15 hours, 8 minutes, 8 seconds. We'll learn about solstice myths, traditions and how important this special day was in the past.	Cost: \$3.00 Pre-register by: 6/17 Min. 5 Max. 25	To register or for more information: Email: bdispenza@allencountyparks.org Call: 449-8619 Bob Dispenza
Monthly Birding Hike		Fox Island County Park
June 21, Saturday	9 AM	Nature Center
Join fellow birders for a birding walk. All levels of experience welcome. Call or FB message to register	Cost: \$3 or FREE w/ Park Pass Pre-register by: 6/20 Min. 5 Max. 30	To register or for more information: Email: ewebb@allencountyparks.org Call: 449-3184 Eva Webb
Monthly Women's Hike		Fox Island County Park
June 21, Saturday	11 AM	Nature Center
Join in for a hike on the dune led by the environmental educator, Eva. Bring a friend or family member or come alone and meet a new friend on a lovely spring hike. Call or FB message to register.	Cost: \$3 or FREE w/ Park Pass Pre-register by: 6/20 Min. 5 Max. 40	To register or for more information: Email: ewebb@allencountyparks.org Call: 449-3184 Eva Webb
Summer Solstice Event w/ Poetz Portal		Fox Island County Park
June 21, Saturday	1 PM – 3:30 PM	VDWOB
Enjoy a time of listening to the poetry of local poets who will be presenting their works and guiding us in a time of meaningful reflection. Call or FB message to register. 45 spots available	Cost: \$10/person Pre-register by 6/19 Max: 45 people	To register or for more information: Email: ewebb@allencountyparks.org Call: 449-3184 Eva Webb

Afternoon Hike		Fox Island County Park
June 24, Tuesday	1:30 PM	Nature Center
Meet at the nature center. The environmental educator will lead a hike on the dune. Friendly dogs on a leash are welcome. Call or FB message to register.	Cost: \$3 or FREE w/ Park Pass Pre-register by 6/23 Min. 5 Max. --	To register or for more information: Email: webb@allencountyparks.org Call: 449-3184 Eva Webb

Nature Story Time		Metea County Park Nature Center
July 9, Wednesday	10:30 AM	
Butterflies and Bugs Join Jennifer from the Grabill Branch Library and Bob Dispenza from Metea County Park as we learn about the great outdoors! Each session will focus on a nature theme with stories, activities and hands-on learning. We'll meet in the Nature Center then do a little outdoor exploring if weather permits.	Cost: FREE Pre-register by: 6/5	To register or for more information: https://acpl.libnet.info/event/ or Email: bdispenza@allencountyparks.org Call: 449-8619 Bob Dispenza

Full Buck Moon Hike		Metea County Park Nature Center
July 10, Thursday	9:30 PM	
Deer antlers are growing now, so we'll look for signs of our largest animal as we tread softly along our twilight trails. We'll learn about deer biology, management and habitat requirements.	Cost: \$3.00 Pre-register by: 6/6 Min. 5 Max. 45	To register or for more information: Email: bdispenza@allencountyparks.org Call: 449-8619 Bob Dispenza

Lightning Beetle Fest – Celebrate Indiana’s State INsect		Metea County Park Nature Center
July 12, Saturday	9 PM	
Learn all about our favorite natural night light! We will have an evening of programs and hikes to “enlighten” you. Park and Education Manager Bob Dispenza will share about what lightning beetles live here, how to attract and identify them, and then go out in the park to see them in action. We might even try to catch a few to observe closely. Natural fireworks!	Cost: \$3.00 Pre-register by: 7/9 Min. 5 Max. 25	To register or for more information: Email: bdispenza@allencountyparks.org Call: 449-8619 Bob Dispenza